

# Year 10 Boys Australian Football



WAFootball



## *Carnivals 2026*

Division 1	Wednesday 19 August	Lightning Park
Division 2	Wednesday 29 July	Lightning Park
Division 3	Wednesday 12 August	Lightning Park
Division 4	Wednesday 5 August	Lightning Park
Division 5	Wednesday 5 August	Santich Park
Division 6	Wednesday 29 July	Santich Park
SW Division	Wednesday 29 July	Hay Park

## CARNIVAL MANAGERS

<i>CARNIVAL</i>	<i>DATE</i>	<i>VENUE</i>	<i>MANAGER</i>
Boys Div 1	Wed 19 Aug	Lightning Park	Rebecca Abé - 0408 905 770
Boys Div 2	Wed 29 July	Lightning Park	Trent Sharpe - 0408 958 415
Boys Div 3	Wed 12 Aug	Lightning Park	Trent Sharpe - 0408 958 415
Boys Div 4	Wed 5 Aug	Lightning Park	Jodie Sheele - 0403 905 552
Boys Div 5	Wed 5 Aug	Santich Park	Rebecca Abé - 0408 905 770
Boys Div 6	Wed 29 July	Santich Park	Rebecca Abé - 0408 905 770
Boys South West	Wed 29 July	Hay Park	Tom Bottrell - 0416 127 839

# DIVISIONS, VENUES AND GUERNSEY COLOURS

## Division 1

**Lightning Park - 19/08/2026**

CBC | black

Emmanuel CC | navy, teal & white

Mandurah CC | maroon

**TBC** Mazenod | royal blue/white

SW winner

## Division 2

**Lightning Park - 29/07/2026**

Corpus Christi | burgundy with white & navy crest

Court Grammar | teal & blue

Kolbe CC | yellow, navy & red

Mater Dei | white

**TBC** Sacred Heart | red with white stripes

## Division 3

**Lightning Park - 12/08/2026**

**TBC** John XXIII | navy & gold

**TBC** Kennedy BC | navy

La Salle | red & yellow

Nagle CC | green & black

**TBC** Quinns BC | black, teal & red

## Division 4

**Lightning Park - 5/08/2026**

Aranmore CC | dark blue & red

**TBC** Newman | light & royal blue

Seton CC | black & red

**TBC** Ursula Frayne CC | black

## Division 5

**Santich Park - 5/08/2026**

Mother Teresa | blue, black & grey

Irene McCormack | purple

**TBC** St John Bosco | purple, white & teal

St Norbert | blue & gold

## Division 6

**Santich Park - 29/07/2026**

**TBC** Foundation | maroon

**TBC** Kingsway | navy & red

Lumen Christi | light blue & maroon

**TBC** Mercy | blue & yellow

**TBC** Servite | black with green white trim

## South West Division

**Hay Park - 29/07/2026**

Bunbury CC | white, green & red

**TBC** Frederick Irwin | gold

Mandurah BC | navy & gold

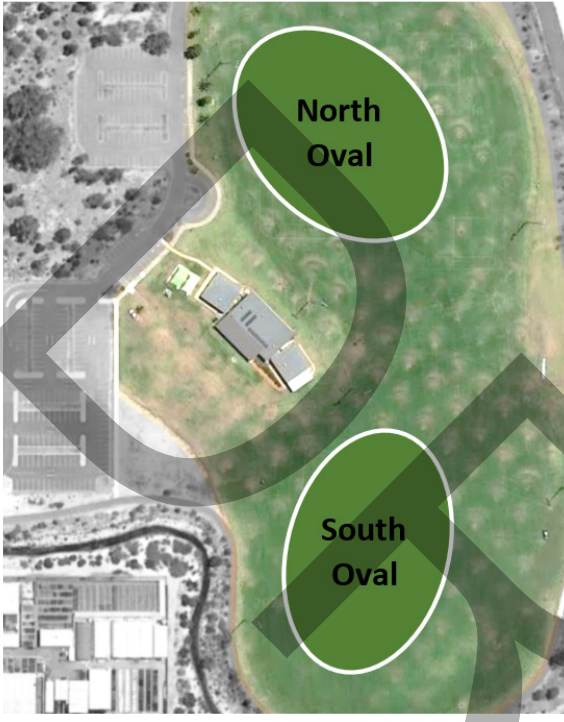
Our Lady of Mercy | navy blue

St Mary MacKillop | maroon

N



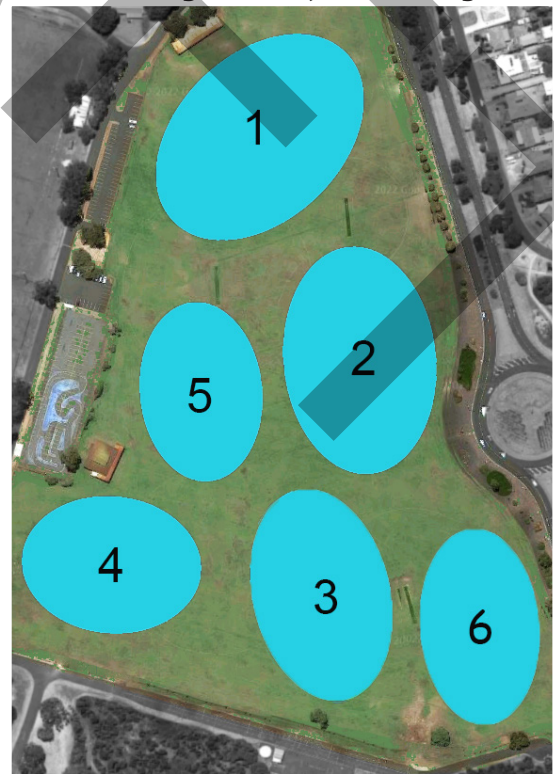
**Lightning Park**  
Della Rd, Noranda



**Santich Park**  
20 Asquith St, Munster



**Hay Park**  
Rotary Drive, Bunbury



# Boys Division 1    Wed 19 Aug    Lightning Park

Set-up school: TBC Mazenod College

FIELD

## Round 1    09:45 AM

<b>TBC Mazenod</b>	v	CBC	N
Mandurah CC	v	Emmanuel	S
SW Winner		BYE	

## Round 2    10:35 AM

SW Winner	v	Emmanuel	N
<b>TBC Mazenod</b>	v	Mandurah CC	S
CBC		BYE	

## Round 3    11:25 AM

Mandurah CC	v	SW Winner	N
Emmanuel	v	CBC	S
<b>TBC Mazenod</b>		BYE	

## Round 4    12:15 PM

CBC	v	Mandurah CC	N
SW Winner	v	<b>TBC Mazenod</b>	S
Emmanuel		BYE	

## Round 5    1:05 PM

Emmanuel	v	<b>TBC Mazenod</b>	N
CBC	v	SW Winner	S
Mandurah CC		BYE	

Presentations & acknowledgements commence at 1:50 PM

All matches consist of 2 x 15 minute halves,  
with a 5-minute half time break.

There is 15 minutes change-over time between games.

# Boys Division 2 Wed 29 July Lightning Park

Set-up school: TBC Sacred Heart

FIELD

## Round 1 09:45 AM

Court	v	Mater Dei	N
TBC Sacred Heart	v	Corpus	S
Kolbe		BYE	

## Round 2 10:35 AM

Kolbe	v	Corpus	N
Court	v	TBC Sacred Heart	S
Mater Dei		BYE	

## Round 3 11:25 AM

TBC Sacred Heart	v	Kolbe	N
Corpus	v	Mater Dei	S
Court		BYE	

## Round 4 12:15 PM

Mater Dei	v	TBC Sacred Heart	N
Kolbe	v	Court	S
Corpus		BYE	

## Round 5 1:05 PM

Corpus	v	Court	N
Mater Dei	v	Kolbe	S
TBC Sacred Heart		BYE	

Presentation & acknowledgements commence at 1:50 PM

All matches consist of 2 x 15 minute halves,  
with a 5-minute half time break.

There is 15 minutes change-over time between games.

# Boys Division 3 Wed 12 Aug Lightning Park

Set-up school: TBC Quinns BC

FIELD

## Round 1 09:45 AM

Nagle	v	<b>TBC</b> John XXIII	N
<b>TBC</b> Quinns	v	La Salle	S
<b>TBC</b> Kennedy		BYE	

## Round 2 10:35 AM

<b>TBC</b> Kennedy	v	La Salle	N
Nagle	v	<b>TBC</b> Quinns	S
<b>TBC</b> John XXIII		BYE	

## Round 3 11:25 AM

<b>TBC</b> Quinns	v	<b>TBC</b> Kennedy	N
La Salle	v	<b>TBC</b> John XXIII	S
Nagle		BYE	

## Round 4 12:15 PM

<b>TBC</b> John XXIII	v	<b>TBC</b> Quinns	N
<b>TBC</b> Kennedy	v	Nagle	S
La Salle		BYE	

## Round 5 1:05 PM

La Salle	v	Nagle	N
<b>TBC</b> John XXIII	v	<b>TBC</b> Kennedy	S
<b>TBC</b> Quinns		BYE	

Presentation & acknowledgements commence at 1:50 PM

All matches consist of 2 x 15 minute halves,  
with a 5-minute half time break.

There is 15 minutes change-over time between games.

# Boys Division 4

Wed 5 Aug

Lightning Park

Set-up school: Aranmore

FIELD

## Round 1

09:45 AM

<b>TBC</b> Ursula Frayne	v	<b>TBC</b>	N
Aranmore	v	<b>TBC</b> Newman	S
Seton		BYE	

## Round 2

10:35 AM

Seton	v	<b>TBC</b> Newman	N
<b>TBC</b> Ursula Frayne	v	Aranmore	S
<b>TBC</b>		BYE	

## Round 3

11:25 AM

Aranmore	v	Seton	N
<b>TBC</b> Newman	v	<b>TBC</b>	S
<b>TBC</b> Ursula Frayne		BYE	

## Round 4

12:15 PM

<b>TBC</b>	v	Aranmore	N
Seton	v	<b>TBC</b> Ursula Frayne	S
<b>TBC</b> Newman		BYE	

## Round 5

1:05 PM

<b>TBC</b> Newman	v	<b>TBC</b> Ursula Frayne	N
<b>TBC</b>	v	Seton	S
Aranmore		BYE	

Presentation & acknowledgements commence at 1:50 PM

All matches consist of 2 x 15 minute halves,  
with a 5-minute half time break.

There is 15 minutes change-over time between games.

# Boys Division 5

Wed 5 Aug

Santich Park

Set-up school: Mother Teresa

FIELD

## Round 1

10:00 AM

Irene McCormack	v	<b>TBC</b> St J Bosco	N
St Norbert	v	Mother Teresa	S

## Round 2

11:05 AM

Mother Teresa	v	<b>TBC</b> St J Bosco	N
Irene McCormack	v	St Norbert	S

## Break for Lunch

11:50 AM

## Round 3

12:20 PM

Mother Teresa	v	Irene McCormack	N
<b>TBC</b> St J Bosco	v	St Norbert	S

Concluding acknowledgements commence at 1:15 PM

All matches consist of 2 x 20 minute halves,  
with a 5-minute half time break.

There is 20 minutes change-over time between games.

# Boys Division 6 Wed 29 July Santich Park

Set-up school: Lumen Christi

FIELD

## Round 1 09:45 AM

<b>TBC</b> Foundation	v	<b>TBC</b> Mercy	N
Lumen Christi	v	<b>TBC</b> Kingsway	S
<b>TBC</b> Servite		BYE	

## Round 2 10:35 AM

<b>TBC</b> Servite	v	<b>TBC</b> Kingsway	N
<b>TBC</b> Foundation	v	Lumen Christi	S
<b>TBC</b> Mercy		BYE	

## Round 3 11:25 AM

Lumen Christi	v	<b>TBC</b> Servite	N
<b>TBC</b> Kingsway	v	<b>TBC</b> Mercy	S
<b>TBC</b> Foundation		BYE	

## Round 4 12:15 PM

<b>TBC</b> Mercy	v	Lumen Christi	N
<b>TBC</b> Servite	v	<b>TBC</b> Foundation	S
<b>TBC</b> Kingsway		BYE	

## Round 5 1:05 PM

<b>TBC</b> Kingsway	v	<b>TBC</b> Foundation	N
<b>TBC</b> Mercy	v	<b>TBC</b> Servite	S
Lumen Christi		BYE	

Presentation & acknowledgements commence at 1:50 PM

All matches consist of 2 x 15 minute halves,  
with a 5-minute half time break.

There is 15 minutes change-over time between games.

**Boys SW Division**

**Wed 29 July**

**Hay Park**

**Set-up school: Bunbury CC**

FIELD

**Round 1**

**09:45 AM**

O Lady o Mercy	v	Mandurah BC	1
Bunbury CC	v	St M MacKillop	2
<b>TBC</b> Frederick Irwin		BYE	

**Round 2**

**10:35 AM**

St M MacKillop	v	Mandurah BC	1
O Lady o Mercy	v	<b>TBC</b> Frederick Irwin	2
Bunbury CC		BYE	

**Round 3**

**11:25 AM**

St M MacKillop	v	<b>TBC</b> Frederick Irwin	1
Mandurah BC	v	Bunbury CC	2
O Lady o Mercy		BYE	

**Round 4**

**12:15 PM**

St M MacKillop	v	O Lady o Mercy	1
Bunbury CC	v	<b>TBC</b> Frederick Irwin	2
Mandurah BC		BYE	

**Round 5**

**1:05 PM**

<b>TBC</b> Frederick Irwin	v	Mandurah BC	1
O Lady o Mercy	v	Bunbury CC	2
St M MacKillop		BYE	

**Presentation & acknowledgements commence at 1:50 PM**

**All matches consist of 2 x 15 minute halves,  
with a 5-minute half time break.**

**There is 15 minutes change-over time between games.**

# ACC Year 10 Australian Football Carnival Procedures & Rules

The competition manager reserves the right to cancel, change or amend any or all parts of this format leading up to and on the day including playing times and the fixtures. The ACC endeavours to uphold the Association's maxim of *'Sport in the Right Spirit'* in all stages of planning and running of this competition.

## FIELD SET-UP

**Set-up schools are named at the top of each carnival's fixtures.** These schools are to arrive one hour prior to the first round, bring sufficient markers for each field boundary, and apply goal post pads to all posts. Most venues can provide goal post pads. The ACC will notify schools if they are required to bring a set.

At the end of the final round of matches, all schools are required to assist with the return of goal post pads and oval markers.

**BRIEFING** will occur at a central location at 9:15 a.m. at all venues. **\*Coaches/Managers, captains and all umpires must attend the briefing at the allocated time.\***

**TIMING** Central timing will be used at all venues. All rounds will start on time; coaches are expected to have their teams briefed, adequately warmed-up and on field in position before the starting siren. All fixtures will be played in 2 halves. (See fixture pages.)

**UMPIRES** **Each team is to provide an appropriately attired goal umpire with white goal flags.** This can be a senior student or appropriate adult deemed competent for the role. Players are not to be used as goal umpires.

Most field umpires will be WA Football accredited umpires sourced by the ACC through WA Football. If schools are required to bring a field umpire, they will be alerted to this via email ahead of the carnival date.

## SQUAD SIZES & PLAYER AGES

**In Divisions 1-3 and the SW division, teams are of 18 on-field players, and squad sizes are not to exceed 25. In Divisions 4-6, teams are of 16 on-field players, and squad sizes are not to exceed 22.** Match On-Field Equalisation rules apply.

Teams are made up of year 10 students. Students in years 7, 8, 11 or 12 cannot participate. Teams can be supplemented with year 9 students if the following applies:

1. For Divisions 1-3, there is a maximum of six Year 9 students.
2. For Divisions 4-6, there is a maximum of five Year 9 students.
3. Schools do not promote talented Year 9 students. This is not in the spirit of the competition.

For the Division 1 carnivals, a team list must be submitted to the ACC two working days before the event.

## UNIFORMS & PLAYER EQUIPMENT

All players must wear an official school Australian Football uniform which includes the same shorts, socks and guernsey. **Schools should check their fixtures for possible similarities of colours with opponents and come prepared for this.** No jewellery can be worn. Mouth guards are strongly recommended by the ACC for all players. Schools allowing players to play without mouth guards take full responsibility for any injuries incurred.

Runners and water carriers must be wearing school PE uniforms and appropriate high-vis vests.

**FOOTBALLS** Each school must provide their own **size 4 leather** game ball and warm-up footballs.

**WEATHER** In case of wet weather, teams are encouraged to bring a small pop-up tent for shelter around the ovals. There is some shelter around the club rooms at most venues.

## DRINKS/FOOD

Each team is responsible for this. A canteen is usually available at Lightning Park and Santich Park; schools will be advised regarding this closer to their carnival date.

Drinking water is available at all venues for refilling water bottles. Students should be advised to eat during their bye round or lunch break depending upon their fixtures. For venues without open canteens, students will need to be advised to bring a packed lunch. Team Managers/Coaches can bring an esky with ice, drink containers etc.

## FACILITIES & AMENITIES

There are toilets made available at all venues.

St John Ambulance Event First Aid Officers will be at all venues

## START AND END OF GAME ACKNOWLEDGEMENTS

Teams line up opposite each other in the centre of the ground. At the completion of the game each team captain will call his team to give three cheers to the other team.

**EVENT RULES** are in accordance with the 2026 WA Football Year 10 Competition Rules 58.e, 58.g - p.

## COMPETITION STRUCTURE

After each year's competition, schools will be elevated or relegated from their allocated division depending on where they placed. The following protocols apply to this process:

The 1st placed school in each division will be elevated to the next higher division, e.g. winner of division 3 will be elevated to division 2, etc. and the lowest placed school in each division will be relegated to the next lower division, e.g. last place for division 3 will be relegated to division 4, etc.

In the event that the South West carnival winning school withdraws from their place in the division 1 carnival, the winner of the second division has the option to play in this carnival in that same year, under the following conditions:

- a) If they place 5<sup>th</sup> in Div 1 they will be relegated back to Division 2 for the following year.
- b) If they place higher than 5<sup>th</sup>, they will remain in Division 1 for the following year.
- c) If they choose not to play, they will be elevated to division 1 in the following year.

Ladder points for games are: **2** points for a win. 1 point for a draw and 0 points for a loss.

## SCORECARDS

Scorecards are to be signed by **both team coaches** at the completion of each fixture. It is assumed that scoring discrepancies are settled immediately at the conclusion of the game and that all results handed in to the ACC are final.

**A maximum margin of 48 points** is to be applied. If a margin of 48 points is reached in a game, scorecards should be completed and no further scoring should be recorded. The game will continue until full time, with the expectation that the winning team modify their play to create a better contest (e.g. resting their strongest players, setting player challenges like playing with their non-dominant side, etc.)

**RESULTS** Carnival fixtures, results and ladders will be available online via *Clipboard*.

## POST-GAME

Presentations/acknowledgements will commence ASAP following the final round of fixtures. All players and coaches are asked to make their way to the designated area promptly once equipment has been brought in. At the Division 1 Carnival, a representative from WA Football will attend to present the winning team with the team trophy/perpetual cup and player medallions. In all other metro divisions the winning team will be presented with a perpetual shield.

# MATCH OPERATIONS

Football - Size 4 leather footballs.

Ground size - 135m-185 (L) x 110m-155m (W).

**Positions** as per the Laws of Australian Football and the WA Football '*Match On-Field Equalisation (Even up and Even Down)*' Policies.

**Out of Bounds** - Last Possession Rule

From a kick or handball, a free kick is to be awarded to the nearest opponent.

If a player runs the ball over the boundary line, a free kick is to be awarded to the nearest opponent.

If the ball is off hands or a player's body, a ball-up is to occur 10m in from the boundary line.

If there is any doubt as to whose free kick it is, a ball-up is to occur 10m in from the boundary line.

**Deliberate Rushed Behinds** - will be paid as per the Laws of Australian Football.

**Protected Area** - The protected area at this level is 5m.

**Order-off Rule** - To be applied as per the Send Off Rule (Yellow and Red Cards). ACC stipulates that a player receiving a Red Card may not enter the playing surface for the remainder *of the day*; however, depending on school staffing, the player may sit with the bench.

**Tackling** – Tackling, bumping, smothering and shepherding is permitted as per AFL Laws of the game.

**High Contact** - All high contact shall be paid as a free kick regardless of whether the ball carrier was responsible for the high contact via a shrug, drop, arm lift or duck.

# COMPETITION ROLES

## Field Umpires

All umpires must comply with the Laws of Australian Football, WA Football Junior and Youth Rules and Regulations and any competition variations adopted by the governing bodies.

- Should a field umpire not be available to officiate at any match, the opposing coaches or team officials may agree to appoint any person they deem appropriate to act in that capacity.
- All field umpires shall be suitably attired for the match.
- The collection of umpire related match documents is at the discretion of the WAFC.
- Any officially appointed emergency umpire will have the same powers as the central umpires.

## Goal Umpires

Each competing team shall supply a goal umpire who should be of sufficient knowledge and competency to carry out all responsibilities of the position, as defined in the Laws of the Game.

- Goal umpires will wear the approved attire and have two signalling flags.
- Goal umpires will be supplied with a scorecard and should understand how to complete it correctly.
- Goal umpires will keep a record of each team's score during the game. They will compare scorecards with the other goal umpire at the end of each half.
- At the conclusion of the game, the goal umpires will check scorecards, verify they are the same, have them signed by both Team Coaches and hand them to the ACC Carnival Manager.
- The goal umpire will endeavour to keep the area immediately behind the goal line clear of spectators and other obstructions.
- The goal umpire is not permitted to coach, encourage or otherwise engage with players.

## Boundary umpires

Boundary umpires are not required as the Last Possession Rule will apply as per 'Out of Bounds'.



*Find fixtures & results online at*



## *History of Winners*

	Division 1	Division 2	Division 3	Division 4	Division 5	Division 6	SW Division
2019	Bunbury CC	La Salle	Nagle CC	Irene McCormack	Lumen Christi	n.a.	Bunbury CC
2020	Sacred Heart	Mater Dei	n.a.	John XXIII	Helena	n.a.	Mandurah CC
2021	Emmanuel CC	Mazenod	Newman	Irene McCormack	Ursula Frayne	Kolbe CC	Mandurah CC
2022	Bunbury CC	Corpus Christi	John XXIII	Kennedy BC	All Saints'	Edmund Rice	Mandurah CC
2023	Emmanuel CC	John XXIII	Nagle CC	Seton CC	Ursula Frayne	Mother Teresa	Mandurah CC
2024	Emmanuel CC	CBC	Kolbe CC	La Salle	Quinns BC	Lumen Christi	Our Lady of Mercy
2025	CBC	Mandurah CC	Court GS	Quinns BC	Seton CC	Swan CC	Our Lady of Mercy